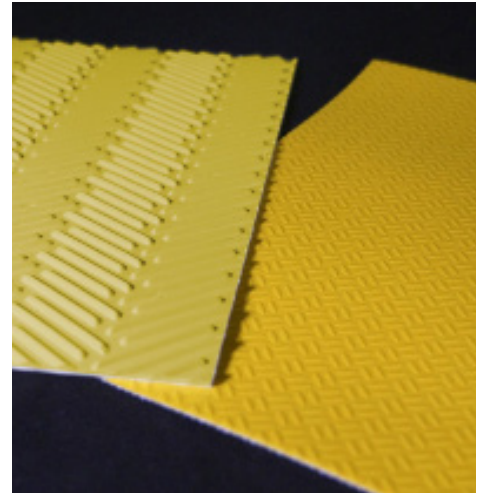


TremPly® KEE Walkway and Protection Mat

Enhances roof traffic safety and optimizes membrane protection in high-traffic maintenance areas.



DESCRIPTION

Both the TremPly® KEE Walkway and Protection Mat are manufactured from a UV stable, proprietary KEE modified vinyl and designed to improve rooftop safety, especially when the surface is wet.

BASIC USES

Both products create stable, highly visible paths for rooftop traffic. They will improve both slip resistance and traction, and protect against possible damage from dropped or improperly handled materials. The Walkway's herringbone ribbed texture makes it an excellent choice where foot traffic is heavy; the Protection Mat is the right fit for areas with a greater need for durability and puncture resistance.

APPLICATION

Install the TremPly KEE Walkway or Protection Mats around hatches, doorways and other roof access points; around mechanical equipment that undergoes scheduled maintenance; or where there is frequent foot traffic.

You can easily cut TremPly KEE Walkway rolls into sizes and shapes to meet most application requirements, and spot hot air weld it directly to the TremPly KEE or KEE FB roof membrane.

The application information provided in this data sheet serves as general guidance. Please refer to Tremco application guides and project specific specifications or consult with your local Tremco Roofing sales representative for project specific application requirements. Refer to the Safety Data Sheet (SDS) for material precautions.

PHYSICAL PROPERTIES

PROPERTY	TYPICAL VALUE
Walkway Material:	
Color	Light Yellow
Breaking Strength (lbs)	56
Dimensional Stability (%)	-1.6 MD / +.63 XMD
Elongation (%)	205
Roll Size	30 in x 50 ft (76 cm x 15.2 m)
Thickness	5/32 in (4 cm)
Protection Mat:	
Color	Yellow
Breaking Strength	1,200
Dimensional Stability (%)	0.5 MD / .5 XMD
Elongation (%)	15%
Pad Size	28" x 48 ft (71 cm x 13.1 m)
Puncture Resistance	850 lbs.
Tear Strength	350 lbs
Thickness	15/64 in (0.6 cm)

TremPly® KEE Walkway and Protection Mat

MAINTENANCE

Your local Tremco Roofing representative can provide you with effective maintenance procedures, which may vary depending upon specific conditions. Periodic inspections, early repairs and preventive maintenance are all part of a sound roof program.

PRECAUTIONS

Users must read container labels and Safety Data Sheets for health and safety precautions prior to use.

TECHNICAL SUPPORT

Your local Tremco Representative, working with the Technical Service Staff, can help analyze conditions and needs to develop recommendations for special applications. The services of the Tremco Research Center, which has earned a unique reputation in weatherproofing technology, complement and extend the service of the Tremco Service Staff.



Roofing & Building Maintenance

www.tremcoroofing.com

3735 Green Road
Beachwood, Ohio 44122
1.800.852.6013

220 Wicksteed Avenue
Toronto, Ontario, M4H 1G7
1.800.668.9879

Tremco Roofing and Building
Maintenance is part of Tremco
Construction Products Group.

Tremco is a US Registered trademark of Tremco CPG Inc.

The information provided on this data page supersedes all previous data concerning this product and its application.

The Statements provided concerning the materials shown are intended solely as a general guide for material usage and are believed to be true and accurate. Since the manner of use is beyond our control, Tremco DOES NOT MAKE NOR DOES IT AUTHORIZE ANY WARRANTY OF MERCHANTABILITY OR FITNESS FOR ANY PURPOSE, OR ANY OTHER WARRANTY, GUARANTEE OR REPRESENTATION, EXPRESSED OR IMPLIED, CONCERNING THIS MATERIAL EXCEPT THAT IT CONFORMS TO TREMCO'S PRODUCT SAMPLE. Buyer and user accept the product under those conditions and assume the risk of any failure, injury of person or property and loss or liability resulting from the handling, storage or use of the product, whether or not it is handled, stored, used in accordance with directions or specifications. UNDER NO CIRCUMSTANCE SHALL TREMCO BE LIABLE FOR CONSEQUENTIAL OR INCIDENTAL DAMAGES ARISING FROM ANY BREACH OF WARRANTY. IN ALL CASES, TREMCO'S LIABILITY IS LIMITED, AT TREMCO'S OPTION, TO THE REPLACEMENT OF GOODS, OR THEIR VALUE, PROVEN TO BE DEFECTIVE IN MANUFACTURING.